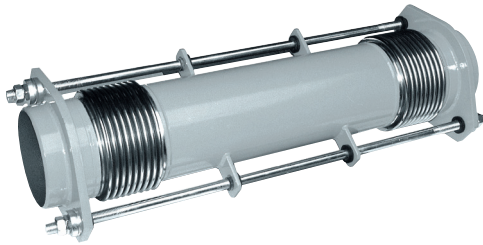


EPSA-25

Lateral Compensator,
movable in all planes
DN50-DN500



Specification

- Engineered Products & Solutions, steel compensator EPSA-25.
- Vacuum proof lateral compensator consisting of two stainless steel bellows with connecting pipe, welded pipe ends (welding ends).
- Welded joint bars with tie rods to absorb reaction force.
- Long connecting pipes allow large lateral movements.
- **Steel Bellows PN6/PN10**
 - Multiple convolution bellows in various stainless steel grades.
 - One ply or multi-ply structure.

Materials

- Stainless Steel.

Material Grade	Material Number as per DIN EN	Temperature	Possible Uses
Stainless Steel	1.4541	-196°C up to +550°C	Low temperature, acids, lyes, gases, fertilizers. Media containing chloride, oil, soap, food stuff, petrol.
	1.4404, 14571	+550°C	

Welding Ends/Connecting Pipe

- Welding pipe ends and connecting pipe

Dimensions

Standard: See tables of type EPSA-13

Others: DIN EN, ANSI, BS etc.

Materials

Standard: 1.0305 (St 35.8)
1.0038 (S235JR)

Others: Stainless Steel etc.

Corrosion Protection

Standard: Anti-Corrosion primed

Others: Special varnish, etc.

Tie Rod Restraints

- Outer restraints carried on spherical washers and conical seats

Materials

Standard: Tie rods 8.8

Others: Stainless Steel etc.

Corrosion Protection

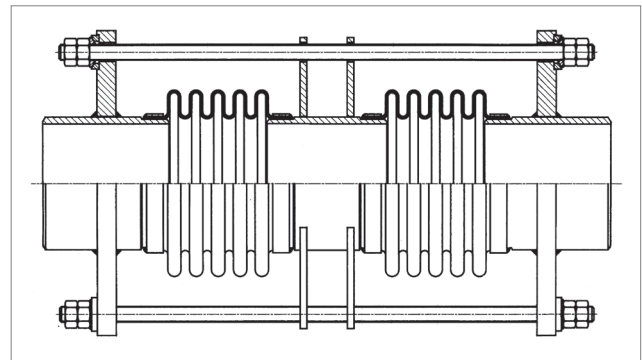
Standard: electrogalvanized

Applications

- For compensating large lateral movement
- For reducing tension
- For 3D movement absorption in pipe systems
- **For installation in;**
 - Pipe line and plant construction
 - Industrial applications

Special Designs

- Other sizes (DN), lengths or pressure ratings on request



Type EPSA-25