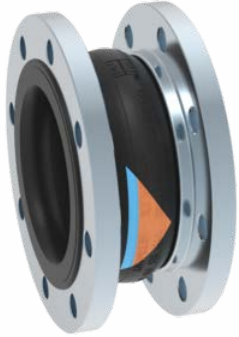


STENFLEX TYPE 'RS'

EPS51-E,P EPDM, Perbunan, Untied, Steel Reinforced



DIN4809

Specification

Engineered Products & Solutions rubber bellows type EPS51 with EPDM, or Perbunan rubber liner and corrosion resistant steel wire mesh reinforcement throughout. Fitted with flanges drilled to EN 1092 PN16/10 in carbon steel with integral bellow stabilising collar. From DN200 up standard drilling is acc. to PN10, but also available with PN16 flanges in carbon steel.

Materials

Liner: EPDM, or Perbunan Rubber
Reinforcement: Corrosion resistant steel wire mesh
Cover: EPDM Rubber (Perbunan Rubber has weather resistant Chloropen (CR))
Flanges: Carbon Steel type ST37.2, Electro Galvanized

Identification

Colour Code: EPDM -Orange/Blue Triangle, Perbunan - Red/Blue Triangle
Markings: Stenflex 'R', Size, Date of Manufacture, Pressure rating

Type approvals

Stenflex type RS has been approved by the German TUV to DIN4809, PRUFNR 910 10 30. Flame resistant test in engine and plant rooms, German Lloyd. GL-NR 33576HH.DNV Lloyds Register.

Specification

Engineered Products & Solutions rubber bellows type EPS52 with EPDM or Perbunan rubber liner, corrosion resistant steel wire mesh reinforcement throughout and steel wire reinforced raised faces fitted with flanges drilled to EN 1092 PN16/10 in carbon steel with integral bellow stabilising collar. From DN200 up standard drilling is acc. to PN10, but also available with PN16 flanges in carbon steel.

Materials

Liner: EPDM or Perbunan Rubber
Reinforcement: Corrosion resistant steel wire mesh
Cover: EPDM Rubber (Perbunan Rubber has weather resistant Chloropen (CR))
Flanges: Carbon Steel type ST37.2, Electro Galvanized
Tie Bars: ISO 898 Gr.8.8 Carbon Steel, Electro Galvanized

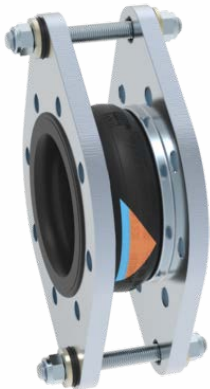
Identification

Colour Code: EPDM - Orange Triangle, Perbunan - Red Triangle
Markings: Stenflex 'R', Size, Date of Manufacture, Pressure rating

Type approvals

Stenflex type RS has been approved by the German TUV to DIN4809, PRUFNR 910 10 30. Flame resistant test in engine and plant rooms, German Lloyd. GL-NR 33576HH.DNV Lloyds Register.

EPS52-E,P EPDM, Perbunan, Tied, Steel Reinforced



DIN4809

Maximum Working Pressure:	16 bar g at 60°C, 6 bar at 110°C	Temperature Range:	-40°C to 110°C
Allowable Test Pressure:	24 bar g	Vacuum:	0.05 bar abs. with vacuum support ring (from DN65)
Burst Pressure:	>50 bar g	Special Application:	Flame Proof Product

Nominal Diameter	Supplied Length	Inside Diameter	Sealing Face OD	Axial Movement Compression EPS51 Only	Axial Movement Extension EPS51 Only	Movement Angular EPS51 Only	Movement Lateral	Product Code
mm	mm	mm	mm	mm	mm	Degrees	+/- mm	
32	130	31+/-3	72	35	10	25	15	EPS51/52-032-E,P
40	130	39 +/-3	81	35	10	25	15	EPS51/52-040-E,P
50	130	49 +/-3	95	35	10	25	15	EPS51/52-050-E,P
65	130	65 +/-3	115	35	10	25	15	EPS51/52-065-E,P
80	130	77 +/-3	127	30	10	20	15	EPS51/52-080-E,P
100	130	100 +/-3	151	30	10	15	15	EPS51/52-100-E,P
125	130	127 +/-3	178	30	10	15	15	EPS51/52-125-E,P
150	130	153 +/-3	206	30	10	10	15	EPS51/52-150-E,P
200	130	202 +/-3	260	25	10	7	15	EPS51/52-200-E,P
250	130	252 +/-3	313	25	10	6	15	EPS51/52-250-E,P
300	130	303 +/-3	363	20	10	5	15	EPS51/52-300-E,P