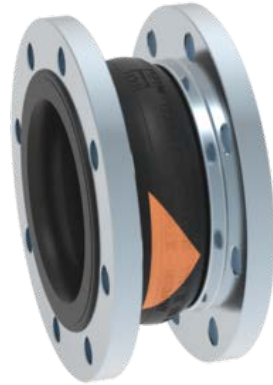


# STENFLEX TYPE 'R'

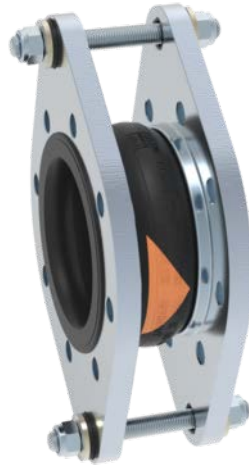
## EPS65-E,B,P

EPDM, Butyl or Perbunan Rubber,  
Untied, Nylon Reinforced



## EPS66-E,B,P

EPDM, Butyl or Perbunan Rubber,  
Tied, Nylon Reinforced



### Specification

Engineered Products & Solutions rubber bellows type EPS65 with EPDM rubber liner and high tensile synthetic fibre reinforcement and steel wire reinforced raised faces fitted with flanges drilled to EN 1092 PN16/10 in carbon steel with integral bellow stabilising collar. From DN200 up standard drilling is acc. to PN10, but also available with PN16 flanges in carbon steel.

### Materials

Liner: EPDM, Butyl or Perbunan Rubber

Reinforcement: Synthetic Fibre

Cover: EPDM Rubber (Perbunan Rubber has weather resistant Chloropen (CR))

Flanges: Carbon Steel type ST37.2, Electro Galvanized

### Identification

Colour Code: EPDM -Orange Triangle, Butyl - White Triangle, Perbunan - Red Triangle Markings: Stenflex 'R', Size, Date of Manufacture, Pressure rating

### Specification

Engineered Products & Solutions rubber bellows type EPS66 with EPDM rubber liner and high tensile synthetic fibre reinforcement and steel wire reinforced raised faces fitted with flanges drilled to EN 1092 PN16/10 in carbon steel with integral bellow stabilising collar. From DN200 up standard drilling is acc. to PN10, but also available with PN16 flanges in carbon steel.

### Materials

Liner: EPDM, Butyl or Perbunan Rubber

Reinforcement: Synthetic Fibre

Cover: EPDM Rubber (Perbunan Rubber has weather resistant Chloropen (CR))

Flanges: Carbon Steel type ST37.2, Electro Galvanized

### Identification

Colour Code: EPDM -Orange Triangle, Butyl - White Triangle, Perbunan - Red Triangle Markings: Stenflex 'R', Size, Date of Manufacture, Pressure rating

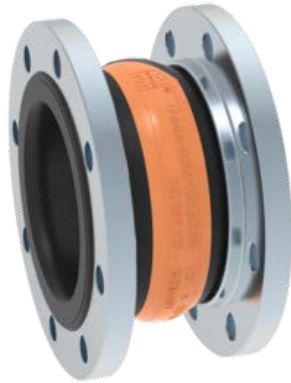
<b>Maximum Working Pressure:</b>	16 bar g at 50°C, 10 bar at 80°C, 6 bar at 90°C	<b>Temperature Range:</b>	-40°C to 90°C
<b>Allowable Test Pressure:</b>	24 bar g	<b>Vacuum:</b>	0.05 bar abs. with vacuum support ring (from DN65)
<b>Burst Pressure:</b>	>48 bar g		

Nominal Diameter	Supplied Length	Inside Diameter	Sealing Face OD	Axial Movement Compression EPS65 Only	Axial Movement Extension EPS65 Only	Movement Angular EPS65 Only	Movement Lateral	Product Code
mm	mm	mm	mm	mm	mm	Degrees	+/- mm	
32	130	31+/-3	72	35	10	25	15	EPS65/66-032-E,B,P
40	130	39+/-3	81	35	10	25	15	EPS65/66-040-E,B,P
50	130	49+/-3	95	35	10	25	15	EPS65/66-050-E,B,P
65	130	65+/-3	115	35	10	25	15	EPS65/66-065-E,B,P
80	130	77+/-3	127	30	10	20	15	EPS65/66-080-E,B,P
100	130	100+/-3	151	30	10	15	15	EPS65/66-100-E,B,P
125	130	127+/-3	178	30	10	15	15	EPS65/66-125-E,B,P
150	130	153+/-3	206	30	10	10	15	EPS65/66-150-E,B,P
200	130	202+/-3	260	25	10	7	15	EPS65/66-200-E,B,P
250	130	252+/-3	313	25	10	6	15	EPS65/66-250-E,B,P
300	130	303+/-3	363	20	10	5	15	EPS65/66-300-E,B,P

# STENFLEX TYPE 'A'

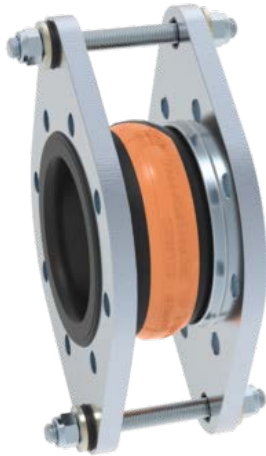
## EPS67-E,B,P

EPDM, Butyl, Perbunan Rubber,  
Untied, Nylon Reinforced



## EPS68-E,B,P

EPDM, Butyl, Perbunan Rubber,  
Tied, Nylon Reinforced



### Specification

Engineered Products & Solutions rubber bellows type EPS67 with EPDM, Butyl or Perbunan rubber liner and high tensile synthetic fibre reinforcement and steel wire reinforced raised faces fitted with flanges drilled to EN 1092 PN16/10 in carbon steel with integral bellow stabilising collar. From DN200 up standard drilling is acc. to PN10, but also available with PN16 flanges in carbon steel.

### Materials

Liner: EPDM, Butyl or Perbunan Rubber

Reinforcement: Synthetic Fibre

Cover: EPDM Rubber (Perbunan Rubber has weather resistant Chloropen (CR))

Flanges: Carbon Steel type ST37.2, Electro Galvanized

### Identification

Colour Code: EPDM -Orange Band, Butyl - White Band, Perbunan - Red Band  
Markings: Stenflex 'A', Size, Date of Manufacture, Pressure rating

### Specification

Engineered Products & Solutions rubber bellows type EPS68 with EPDM, Butyl or Perbunan rubber liner and high tensile synthetic fibre reinforcement and steel wire reinforced raised faces fitted with flanges drilled to EN 1092 PN16/10 in carbon steel with integral bellow stabilising collar. From DN200 up standard drilling is acc. to PN10, but also available with PN16 flanges in carbon steel.

### Materials

Liner: EPDM, Butyl or Perbunan Rubber

Reinforcement: Synthetic Fibre

Cover: EPDM Rubber (Perbunan Rubber has weather resistant Chloropen (CR))

Flanges: Carbon Steel type ST37.2, Electro Galvanized

### Identification

Colour Code: EPDM -Orange Band, Butyl - White Band, Perbunan - Red Band  
Markings: Stenflex 'A', Size, Date of Manufacture, Pressure rating

<b>Maximum Working Pressure:</b>	16 bar g at 50°C, 10 bar at 80°C, 6 bar at 90°C	<b>Temperature Range:</b>	-40°C to 90°C
<b>Allowable Test Pressure:</b>	24 bar g	<b>Vacuum:</b>	0.05 bar abs. with vacuum support ring (from DN65)
<b>Burst Pressure:</b>	>48 bar g		

Nominal Diameter	Supplied Length	Inside Diameter	Sealing Face OD	Axial Movement Compression EPS67 Only	Axial Movement Extension EPS67 Only	Movement Angular EPS67 Only	Movement Lateral	Product Code
mm	mm	mm	mm	mm	mm	Degrees	+/- mm	
25	100	22+/-3	51	20	10	25	10	EPS67/68-025-E,B,P
32	125	31+/-3	72	35	10	25	15	EPS67/68-032-E,B,P
40	125	39+/-3	81	35	10	25	15	EPS67/68-040-E,B,P
50	125	49+/-3	95	35	10	25	15	EPS67/68-050-E,B,P
65	125	65+/-3	115	35	10	25	15	EPS67/68-065-E,B,P
80	150	77+/-3	127	40	10	20	15	EPS67/68-080-E,B,P
100	150	100+/-3	151	40	10	15	15	EPS67/68-100-E,B,P
125	150	127+/-3	178	40	10	15	15	EPS67/68-125-E,B,P
150	150	153+/-3	206	40	10	12	15	EPS67/68-150-E,B,P
200	175	202+/-3	260	45	15	10	15	EPS67/68-200-E,B,P
250	175	252+/-3	313	45	15	8	15	EPS67/68-250-E,B,P
300	200	303+/-3	363	45	15	7	15	EPS67/68-300-E,B,P