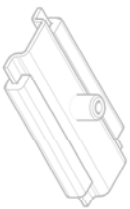
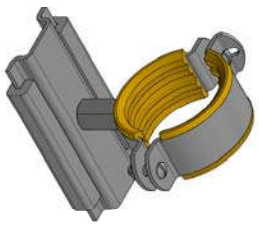
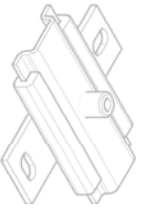


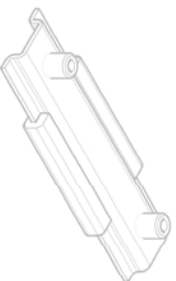
GS 2G & H3G Slide Set Assembly Instructions



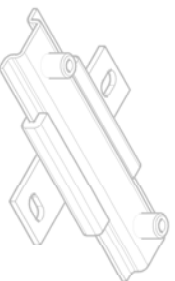
GS 2G/GS H3G



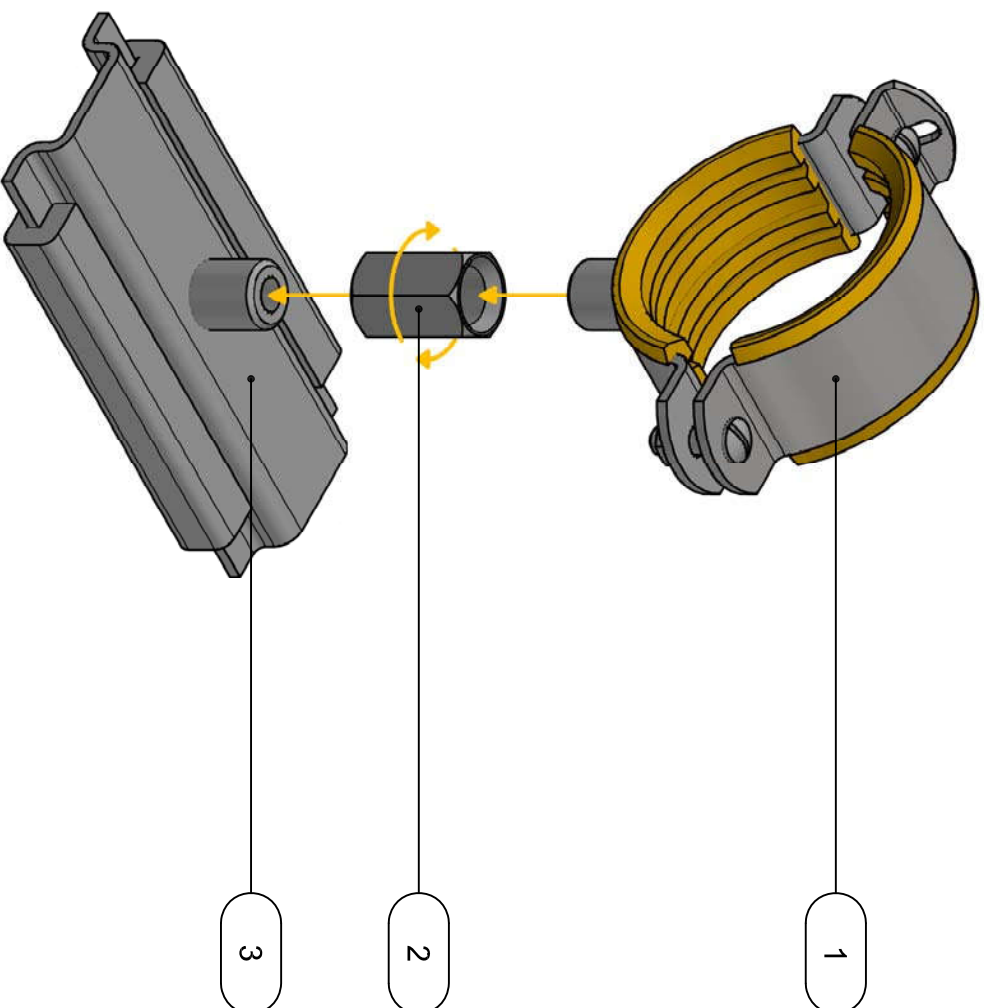
GS 2G-PL/GS H3G-PL



GS 2G2/GS H3G2



GS 2G2-PL/H3G2-PL



1

2

3

No.	Product
1	Stabil D-3G Pipe Clamp
2	Adaptor AD f/f
3	Slide Set GS

All data sheets are available on our e-catalogue

GS 2G (M10/M16)
 GS 2G Single Guide 85mm
 GS 2G2 Double Guide 140mm
 Max Load 1.2KN

GS H3G (M12/M16/1/2")
 GS H3G Single Guide 100mm
 GS H3G2 Double Guide 135mm
 Max Load 9KN

PL
 Allows for dual fixing and the use of Slide Element GS 41 (190658) to allow for axial and lateral movement.

All products are finished BZP (electro-galvanised)

Max Temp 120° (300°C with Silicone Lining)
 Locknut required for H3G slidesets

1/2" Locknut used for H3G Slide Sets.

Drawing	Date	Name	Description
GS	12/12/2011	NST	GS 2G & GS H3G Slide Set
Revision	Date	Name	Project
1			
2			
3			Client



Scale: Not to Scale
 Dwg No.: Slide Set Range
 A 4